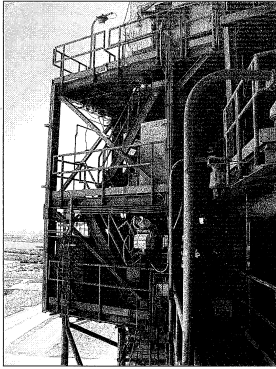
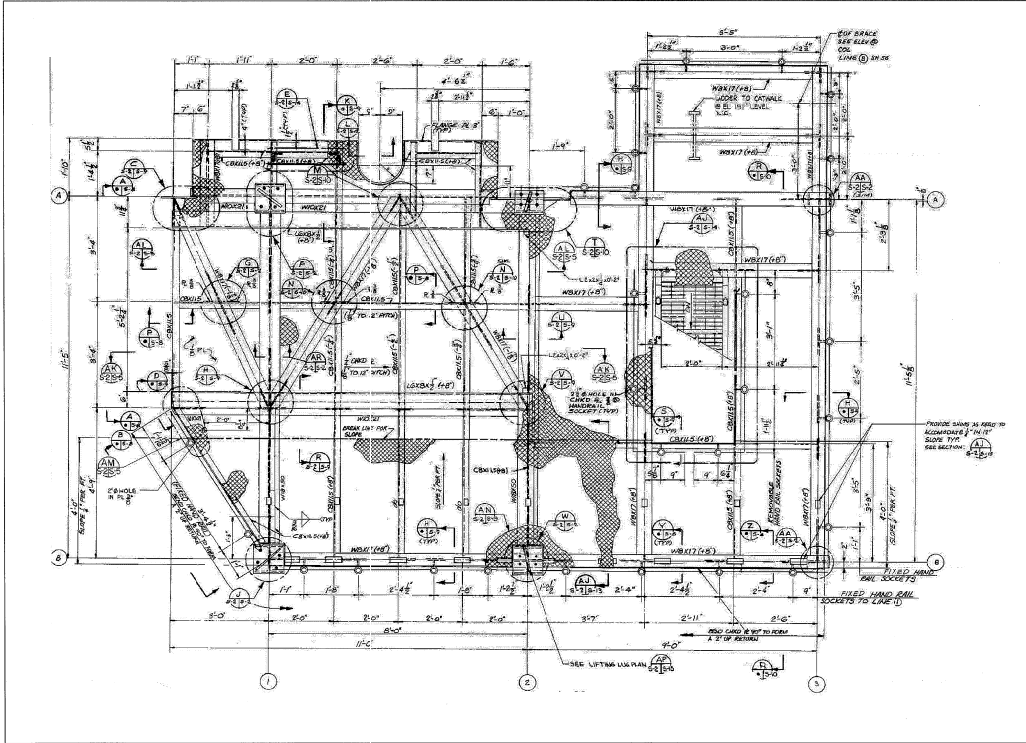
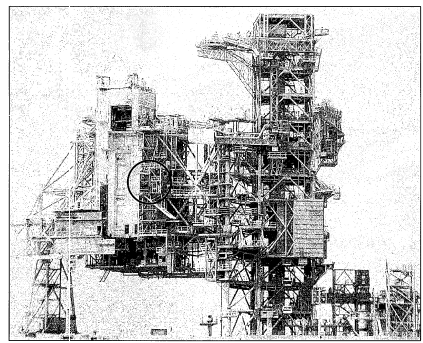


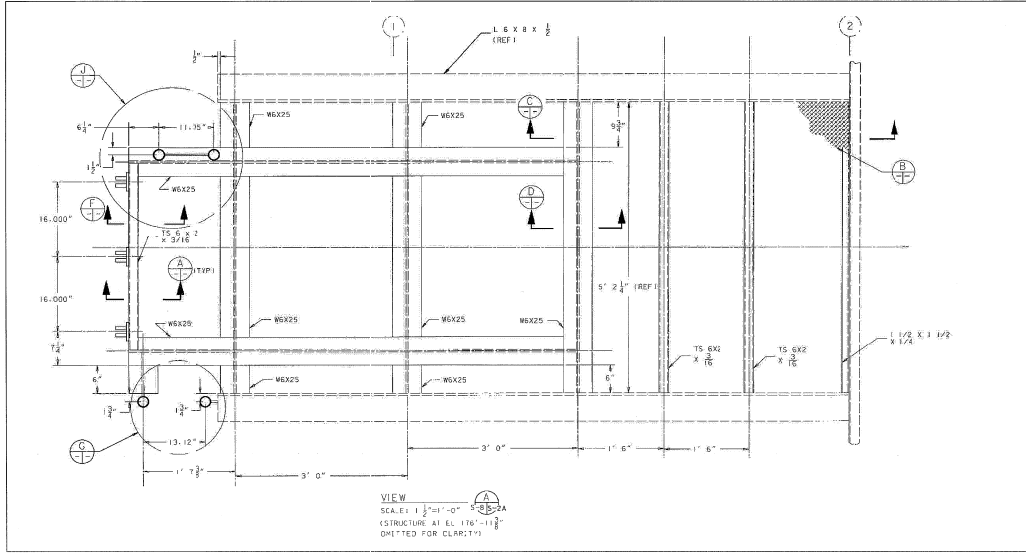
NOTICE: When Government drawings, specifications, or other data are used for any purpose other than in connection with a definitely related Government procurement operation, the United States Government thereby incurs no responsibility or obligation whatsoever, and the fact that the Government may have formulated, furnished, or in any way supplied the said drawings, specifications, or other data is not to be regarded by implication or otherwise as in any manner limiting the liability of any other person or corporation, or conveying any right or permission to reproduce, use, or sell any patented invention that may in any way be related thereto.



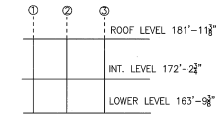
OMBUU
(LOOKING SOUTH FROM RSS WALKWAY)



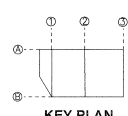
OMBUU



OMBUU EL. 181'-11 3/8" PLAN AND SECTIONS
NTS - SOURCE FILE 79K05836 SHEET S2



KEY ELEVATION



KEY PLAN

SIGNATURES		DATE	DESCRIPTION		DATE	APPROVED
DRAWN			THIS SPACE RESERVED			
S. HAFERKAMP		06/24/09				
CHECKED						
S. BHIDE		06/24/09				
DESIGNED						
N. PONTILLO		06/24/09				
APPROVED						
[Signature]		06/24/09				
TITLE						
S67						
SIZE						
F						
DWG. NO.						
222W2200001						
PROJ. NO.						
96580						
SHEET						
82						