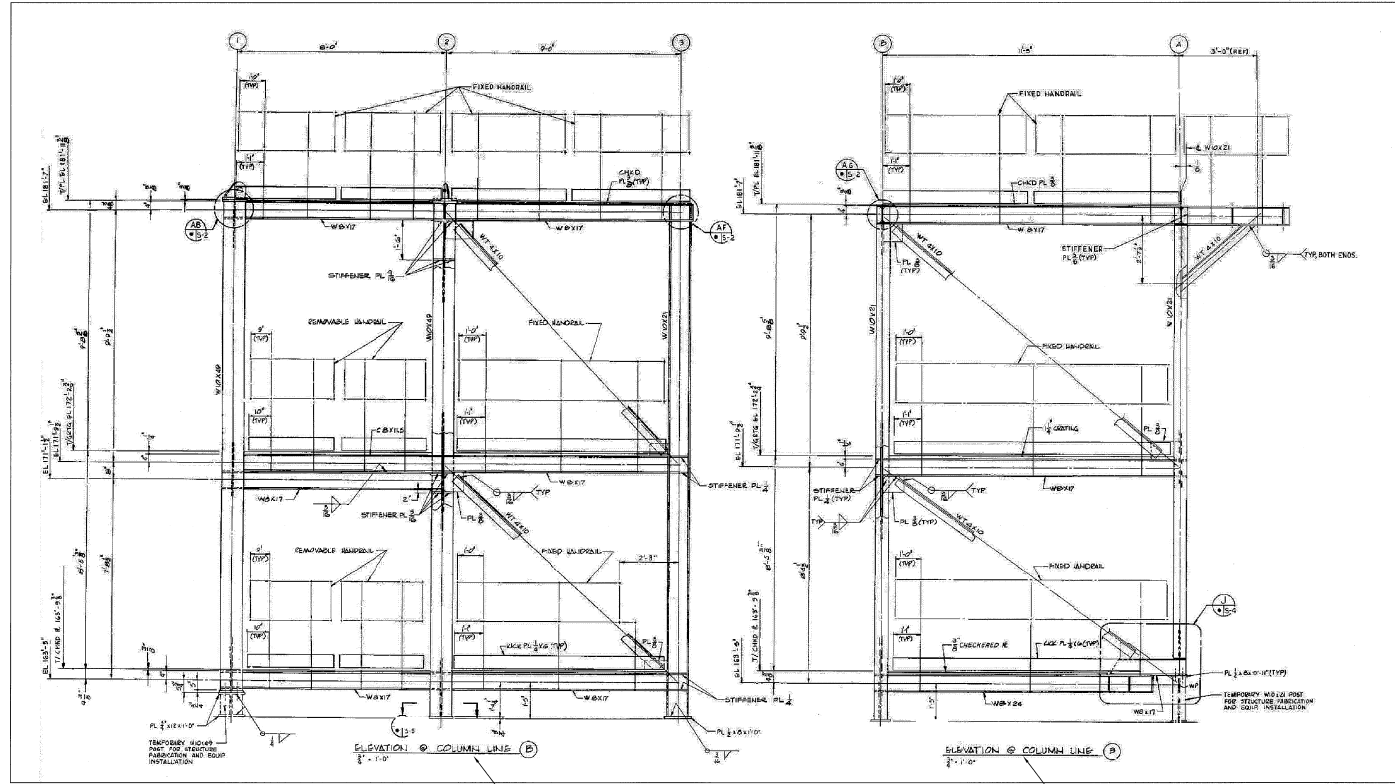


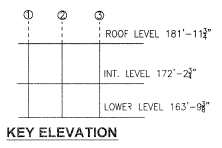
NOTICE: When Government drawings, specifications, or other data are used for any purpose other than in connection with a definite special Government procurement operation, the United States Government thereby incurs no responsibility or obligation whatsoever and the fact that the Government may have furnished, furnished, or in any way supplied the said drawings, specifications or other data is not to be regarded by implication or otherwise as in any manner limiting the liability of any other person or organization, or limiting any rights or privileges in connection therewith, or as in any way admitting liability that may in any way be related thereto.

FLAG NOTES

- 1 OMBUU ELEVATION LINE B.
- 2 OMBUU ELEVATION LINE 3.



OMBUU ELEVATION LINES B AND 3
NTS - SOURCE FILE 79K05836 SHEET 56



STM	ZONE	DESCRIPTION	DATE	APPROVED
REVISIONS				
THIS DRAWING CREATED IN AUTOCAD 2007 FILE FORMAT AND WILL BE REVISED ONLY ON AN AUTOCAD SYSTEM. FILE: 14005006-571.DWG				

JONES EDMUNDS
730 NE WALDO ROAD, GAINESVILLE, FLORIDA 32641 / (352) 377-5821
3910 S WASHINGTON AVE, SUITE 210, TITUSVILLE, FLORIDA 32781 / (321) 269-2550

SIGNATURES	DATE	DESCRIPTION
DRAWN S. HAFERKAMP	06/24/09	NATIONAL AERONAUTICS AND SPACE ADMINISTRATION JOHN F. KENNEDY SPACE CENTER, FLORIDA
CHECKED S. BHIDE	06/24/09	LAUNCH COMPLEX 39B, DEMOLITION OF FSS/RSS AT LAUNCH COMPLEX 39B, DEMOLITION PACKAGE
DESIGNED N. PONTILLO	06/24/08	OMBUU ELEVATION LINES B AND 3
SUBMITTED J. H. [Signature]	6/24/09	
APPROVED [Signature]	DATE	SIZE DWG. NO. F 222W2200001
TITLE		PROJ. NO. 98580 SHEET 86

S71